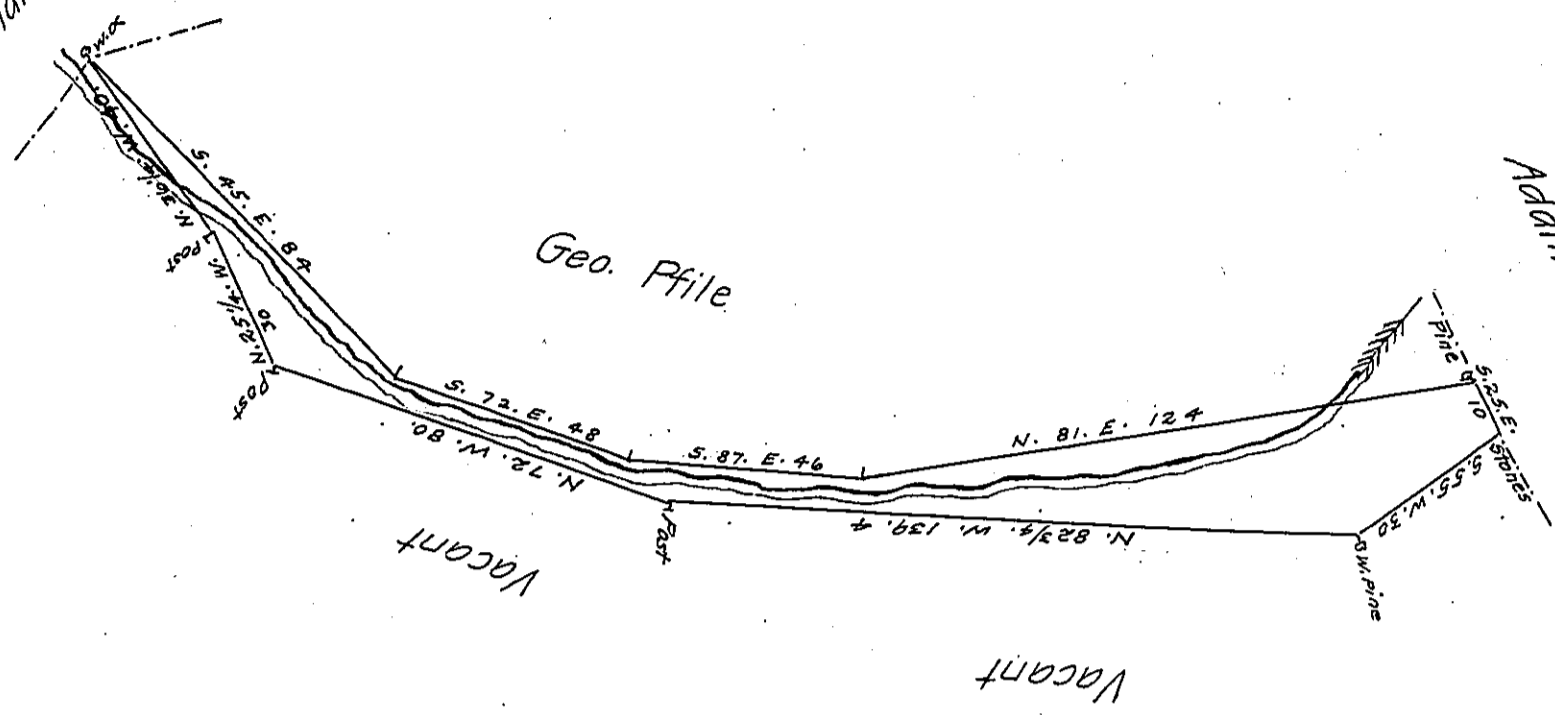


FORM No. 1.

Charles Chamberlin



Situate on Middle Creek in Penns Township in the County of Northumberland Surveyed on the 26 Day of December 1807 for Henry Pfile by Virtue of his Warrant bearing Date on the 3 Day of May 1792 Containing fourteen Acres and Seventy three perches with the usual allowance of Six pr Cent &c.

Henry Donnel D.S.

To Samuel Cochran Esqr. }
 Surveyor General. }

IN TESTIMONY that the above is a copy of the original remaining on file in the Department of Internal Affairs of Pennsylvania, made conformably to an Act of Assembly approved the 16th day of February, 1833, I have hereunto set my Hand and caused the Seal of said Department to be affixed at Harrisburg, this sixteenth day of June 1906

Isaac P Brown
 Secretary of Internal Affairs.